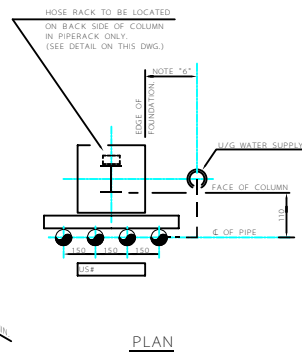
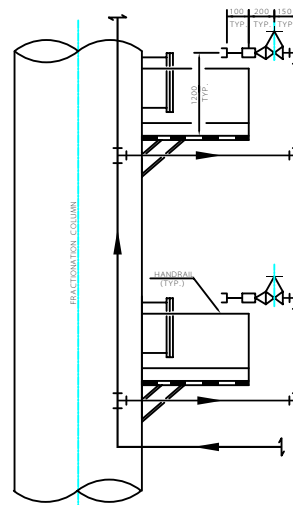


ISOMETRIC DETAIL

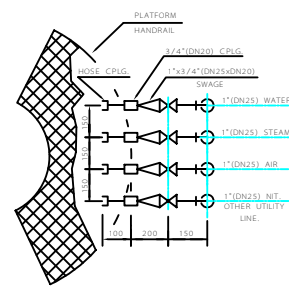
UTILITY STATION TYPE "A"  
(FOR COLUMNS)



PLAN

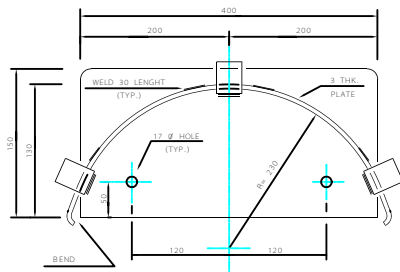


ELEVATION

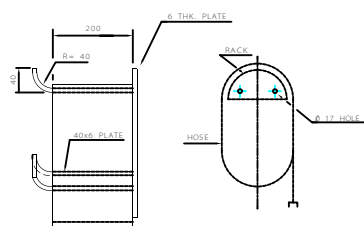


PLAN

UTILITY STATION TYPE "B"  
(FOR FRACTIONATION COLUMNS)

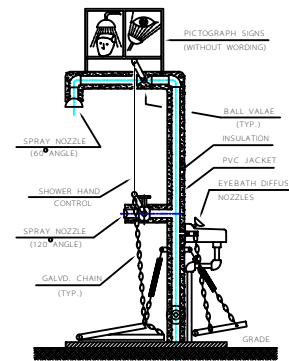
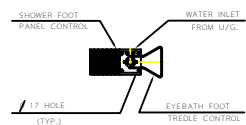


FRONT VIEW



SIDE VIEW

HOSE RACK DETAILS



EMERGENCY SHOWER DETAIL

INSULATED SELF SUPPORTING SHOWER WITH ADDITIONAL BODY  
SPRAY AND FITTED WITH EYEBATH/FACEWASH FONTAIN.  
ALL MODULES ARE REMOVABLE WITH STANDPIPE IN SITUATION.

NOTES

- 1- ALL THICKNESS VALUES AND DIMENSIONS ARE IN mm.
- 2- PROCESS AND UTILITIES PRODUCTION AREA:  
AT GROUND FLOOR: HOSE STATION WILL BE ARRANGED TO REACH ALL EQUIPMENT OR PIPES CONCERNED, MIN. HOSE LENGTH SHALL BE 15000 mm.  
ON STRUCTURES: HOSE STATION WILL BE ARRANGED TO SERVE ALL THE FLOOR. THE WATER HOSE STATION SHALL BE LIMITED TO THE FIRST FLOOR.  
ON FRACTIONATION COLUMNS: HOSE STATIONS WILL BE PROVIDED ON ALL MANHOLES PLATFORM AND ON THE HIGHEST PLATFORM, WITH THE EXCEPTION OF WATER (UNLESS P & I.D. REQUIRED).  
FOR VERTICAL STRUCTURES AND VESSELS:  
IN GENERAL UTILITIES STATIONS WILL BE INSTALLED ON EVERY OTHER FLOOR.
- 3- OFF-SITE AREA FOR STORAGE AND LOADING:  
HOSE STATIONS WILL BE PROVIDED IN PUMP ROOM, IN TANK TRUCK AND/OR RAILWAY LOADING AREA, IN ADDITIVE AND WASTE TREATMENTS AREA.
- 4- HOSE RACK TO BE MADE FROM 3mm THK. PLATE EXCEPT AS NOTED.
- 5- ROUND ALL CORNERS OF HOSE RACK.
- 6- ACCORDING TO U/G SYSTEM PIPING ARRANGEMENT.
- 7- ALL BRANCH CONNECTIONS AS PER JOB SPEC.

THIS DRAWING SUPERSEDES DRAWING No. D-0-5004

NO	REVISION	DATE

IRANIAN PETROLEUM STANDARD  
NO REVISION PERMITTED UNLESS APPROVED BY STANDARD ORGANIZATION

UTILITY STATION, HOSE RACK  
AND EMERGENCY SHOWER DETAILS

DATE	DRAWING No.	SHEET	REV.

IPS - D - PI - 128