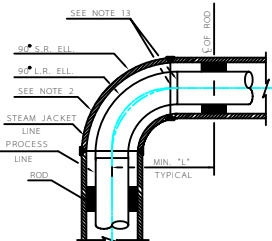


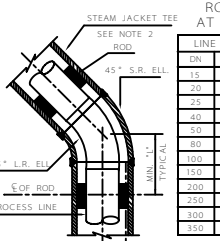
JACKETED PIPE TABLE

LINE SIZE		STEAM COND. & DRAIN CONNECTION SIZE		JACKET SIZE		CONC. RED.
DN	NPS	DN	NPS	90° ELL	45° ELL	
15	1/2"	50	2"	20	3/4"	2"
20	3/4"	50	2"	20	3/4"	2"
25	1"	50	2"	20	3/4"	2"
40	1 1/2"	80	3"	20	3/4"	3"
50	2"	80	3"	20	3/4"	3"
80	3"	100	4"	20	3/4"	4"
100	4"	150	6"	20	3/4"	6"
150	6"	200	8"	25	1"	8"
200	8"	250	10"	25	1"	10"
250	10"	300	12"	25	1"	12"
300	12"	350	14"	25	1"	14"
350	14"	400	16"	25	1"	16"

DETAIL * A *



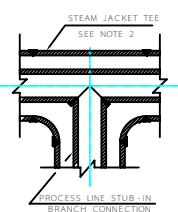
TYP. DETAIL AT BENDS FOR 3/4"(DN20) TO 6"(DN150) PIPE



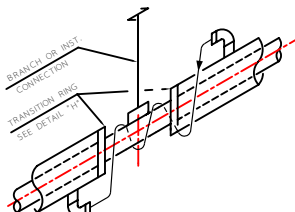
TYP. DETAIL AT 45° ELBOW FOR 3/4"(DN20) TO 14"(DN350) PIPE

ROD LOCATION AT BENDS TABLE

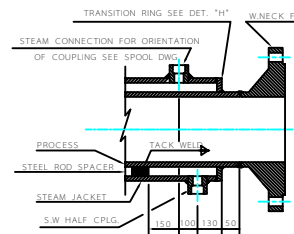
LINE SIZE	"L" DIM.
15 1/2"	1000
20 3/4"	1000
25 1"	1000
40 1 1/2"	1500
50 2"	1500
80 3"	1500
100 4"	1500
150 6"	2000
200 8"	2500
250 10"	3000
300 12"	3000
350 14"	3000



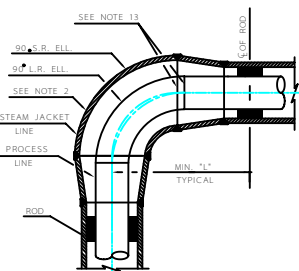
TYP. BRANCH CONN. DETAIL



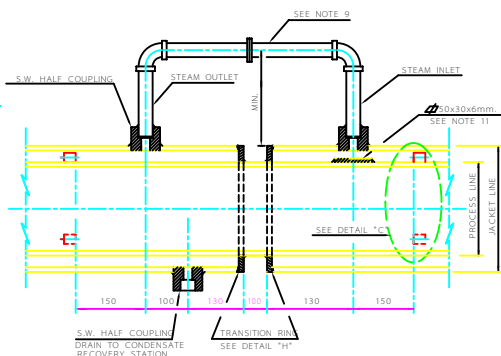
DETAIL * D *



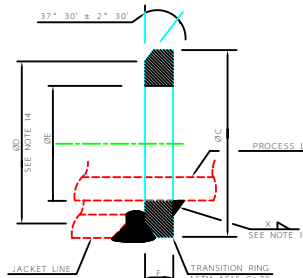
DETAIL * E *



TYP. DETAIL AT BENDS FOR 8"(DN200) TO 14"(DN350) PIPE



DETAIL * G *



DETAIL * H *

TRANSITION RING TABLE

LINE SIZE		TRANSITION RING		
DN	NPS	DN	NPS	
15	1/2"		23.3	
20	3/4"		28.7	
25	1"	50	2"	35.4
40	1 1/2"		50.3	
50	2"	80	3"	63.0
80	3"	100	4"	107.0
100	4"	150	6"	116.1
150	6"	200	8"	207.5
200	8"	250	10"	259.3
250	10"	300	12"	308.0
300	12"	350	14"	337.2
350	14"	400	16"	385.8

- NOTES
- ALL THICKNESS VALUES AND DIMENSIONS ARE IN mm.
 - JACKET FITTING TO BE SPLIT FOR ASSEMBLY OF PROCESS LINE & JACKET
 - LENGTH OF LINE BETWEEN FLANGES OR RINGS TO BE DETERMINED BY STRESS ANALYSIS BUT SHALL NEVER EXCEED 12000.
 - STEEL PIPE TO BE SAME SIZE AS STEAM INLET LINE AS CALLED FOR ON P&ID.
 - JACKETS MAY BE CONNECTED IN SERIES UP TO MAXIMUM LENGTH OF 20000.
 - ROD DIA. BASED ON JACKETING PIPE ASTM A53 Gr.B WITH SCH. STD. UP TO 8"(DN200) & SCH.30 FOR 10"(DN250) & LARGER.
 - ALL WELDINGS SHALL CORRESPOND TO PROJECT WELDING PROCEDURE.
 - STEAM PIPE SIZE TO BE SAME AS CONNECTION SIZE.
 - PROVIDE BREAK FLANGE IF IT IS NECESSARY.
 - IN PROCESS AREA A NEW STEAM SHALL BE SUPPLIED AT EVERY 12 METERS MAX. WHICH IS MAXIMUM LENGTH OF JACKET PIPE AND OUTSIDE THE PROCESS AREA A NEW STEAM SHALL BE SUPPLIED AT EVERY 24 METERS MAX. WHICH IS MAXIMUM LENGTH OF JACKET PIPE. ANY HOW EVERY 12 METERS JACKET PIPE SHALL BE TRAPPED.
 - IMPINGEMENT PLATE FOR PROTECTING PROCESS LINE AGAINST CRROSION.
 - *X* SHALL BE AS FOLLOWS:
 $t \leq 6 \quad X=t$
 $t > 6 \quad X=6$
 WHERE *t* IS THE PIPE WALL THICKNESS.
 - WELDING LOCATION OF PROCESS ELBOW WILL DIFFER RESPECT TO THE JACKETED ELBOW BASED ON ELBOWS DIMENSION.
 - 14-Ø IS BASED ON SCH.40 THICKNESS FOR JACKETING.

IRANIAN PETROLEUM STANDARD

NO REVISION PERMITTED UNLESS APPROVED BY STANDARD ORGANIZATION

STEAM JACKET DETAILS

DATE	DRAWING No.	SHEET	REV.
	IPS - D - PI - 127		