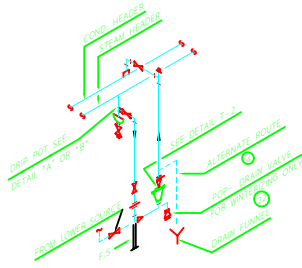


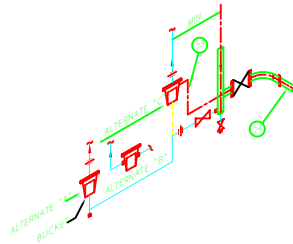
BUCKET TYPE TRAP DIRECTION

10



DETAIL T-1

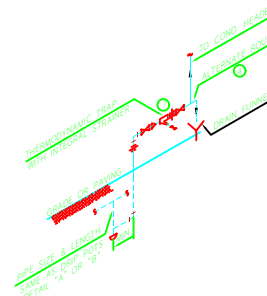
BUCKET TYPE TRAP (IN BUILDING ONLY)



DETAIL T-2

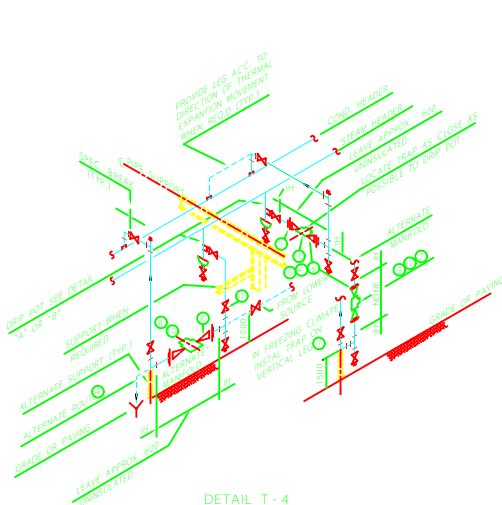
SETTING BUCKET & FLOAT TYPE TRAPS

11



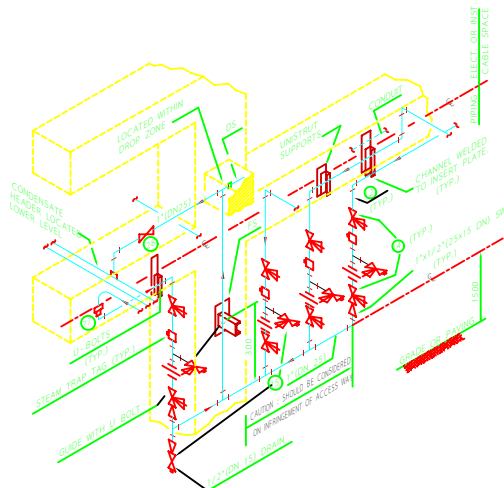
DETAIL T-3

TRAP FOR UNDERGROUND STEAM



DETAIL T-4

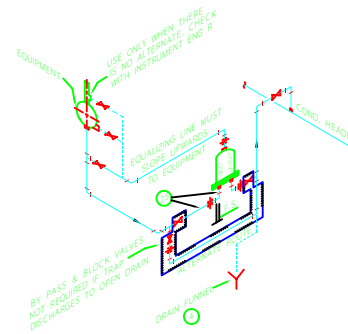
THERMODYNAMIC TRAP



DETAIL T-5

TRAPS FOR STEAM TRACING MANIFOLDS

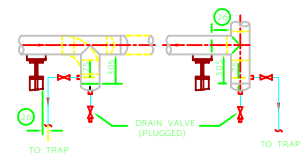
12



DETAIL T-6

BALL FLOAT TRAP FOR CONTINUOUS DRAINAGE

13



DETAIL "A"

DRIP POT INSTALLATION AT ENDS OR RUNS OF HEADERS.

DETAIL "B"

DRIP POT INSTALLATION AT CHANGE OF DIRECTIONS.

DRIP POTS DETAIL

14

DRIP POT CHART

HEADER SIZE		POT SIZE		DRAIN VALVE SIZE	
NPS	DN	NPS	DN	NPS	DN
1/2"	12.7	1/2"	12.7	3/32"	2.0
3/4"	19.0	3/4"	19.0	1/8"	3.2
1"	25.4	1"	25.4	1/4"	6.4
1 1/2"	38.1	1 1/2"	38.1	3/8"	9.5
2"	50.8	2"	50.8	1/2"	12.7
2 1/2"	63.5	2 1/2"	63.5	3/4"	19.0
3"	76.2	3"	76.2	1"	25.4

NOTES

- 1- ALL THICKNESS VALUES AND DIMENSIONS ARE IN mm.
- 2- TRAPS SHOULD BE INSTALLED SO THAT THEY ARE WITHIN REACH OF GRADE, A PLATFORM, OR PORTABLE LADDER & ARE CLOSED TO AND PREFERABLY BELOW THE EQUIPMENT BEING DRAINED.
- 3- MAXIMUM SPACING OF TRAPS TO DRAIN STEAM HEADERS :
a- SATURATED STEAM 76000
b- SUPERHEATED STEAM 152000
- 4- IN COLD CLIMATES AVOID DISCHARGING CONDENSATE TO OPEN DRAINS DIRECTLY WITHIN OPERATING AREA, AND UNDER STAIRWAYS AND LADDERS
- 5- STRAINER NOT REQUIRED IF INTEGRAL WITH TRAP.
- 6- SWAGE AS REQUIRED FOR REDUCTION FROM LINE SIZE.
- 7- WHEN A TRAP IS USED FOR STEAM TRACING, THE STEAM AND CONDENSATE LINES MAY BE RUN TOGETHER IN A COMMON INSULATOR. (SEE DETAIL "E"; DWG. IPS-D-PI-126)
- 8- WHEN A SIGHT GLASS IS PROVIDED, TRAP MUST BE INSTALLED IN A HORIZONTAL POSITION WITH GLASS IN FRONT OR IN A VERTICAL POSITION.
- 9- THIS DETAIL IS TYPICAL OF ALL STEAM TRACING TRAP INSTALLATION.
- 10- IF IMPULSE TRAP IS LOCATED IN HORIZONTAL, IT SHALL BE INSTALLED ON ITS SIDE TO PREVENT FREEZING.
- 11- LOCAT. BLOK VALVE HERE, WHEN LOCATION AT HEADER IS INACCESSIBLE FROM A PORTABLE LADDER.
- 12- VALVES AND PIPING AT TRAP SHALL BE SAME SIZE AS TRAP SIZE.
- 13- TRAP MANIFOLD ARRANGEMENTS SHALL BE LOCATED ABOUT PIPE SUPPORT COLUMNS PER NOTE NO. A1 REFER TO DRAWING IPS-D-PI-102.
- 14- FOR HEAT CONSERVATION SERVICE EACH TRAP SHALL HAVE A BLOK VALVE UPSTREAM AND DOWNSTREAM OF TRAP. TRAPS WILL HAVE AN INTEGRAL STRAINER AND PLUGGED DRAIN.
- 15- IN WINTERIZING SERVICE NO. BLOK VALVE WILL BE REQUIRED AT STEAM TRAPS, DRAINS WILL BE VALVED.
- 16- UNION SHALL NOT BE USED FOR STEAM PRESSURE MORE THAN IS BAR.
- 17- USE WELD ELL OR TEE, WHEN FULL SIZE, STUB-IN'S NOT PERMITTED.
- 18- INSTALL AT THE END OF HEADERS & AT CHANGE OF DIRECTION. NORMALLY NOT REQUIRED IN STRAIGHT RUNS.
- 19- STEAM TRAP CAN BE ORDERED WITH ANY DIFFERENT INLET & OUTLET TRAP DIRECTION AS SHOWN.
- 20- CONDITIONS ARE APPLICABLE ALSO IN THE USE OF FLOAT TYPE TRAPS
- 21- IF NO CONNECTION AVAILABLE ON EQUIPMENT, EQUALIZING LINE MAY BE CONNECTED INTO INLET PIPING AS NEAR TO EQUIPMENT AS POSSIBLE
- 22- VALVE REMAINS CLOSED AT STEAM PRESSURE, OPENS WHEN PRESSURE DROPS
- 23- WHEN TOP OF BUCKET IS ABOVE TURBINE OR EQUIPMENT CONNECTION BEING DRAINED REGULARLY BUCKET TRAP WILL NOT WORK BECAUSE IT'S PRIME CAN NOT BE MAINTAINED. IN SUCH A SITUATION USE ALTERNATE "A" IF CLEARANCE BELOW CONNECTION IS ADEQUATE. WHEN CLEARANCE IS INADEQUATE USE ALTERNATE "B" (TRAP WITH SIDE INLET & OUTLET) OR ALTERNATE "C" (REGULAR BUCKET TRAP FLURN WITH INTERNAL CHECK VALVE).
- 24- STEAM INLET OF TURBINE, THE SAME CONDITIONS APPLY TO ALL OTHER TRAPPED CONNECTIONS AT TURBINES PIPING & EQUIPMENT OR PIPING THAT IS BEING DRAINED THRU A BUCKET TRAP AT A POINT CLOSE TO GRADE OR PAVING.
- 25- STEAM TRAP INLET MUST BE LOWER THAN EQUIPMENT CONNECTION (SET TOP OF FLOAT MIN. 76 BELOW EQUIPMENT LOWEST POINT.)
- 26- ALWAYS CHECK DIRECTION OF THERMAL EXPANSION VERSUS PIPE SUPPORT.
- 27- FOR TUBE APPLICATION SEE WINTERIZING SPECIFICATION.
- 28- VALVE TO BE INSTALLED AS CLOSE TO CONDENSATE HEADER AS POSSIBLE.

THIS DWG. SUPERSEDES DWG. No. D-O-5003

NO.	DESCRIPTION	DATE

IRANIAN PETROLEUM STANDARD

(NO REVISION PERMITTED UNLESS APPROVED BY STANDARD ORGANIZATION)

STEAM TRAP & DRIP POT PIPING ARRANGEMENT

DATE	DRAWING No.	SHEET	REV.

IPS-D-PI-125