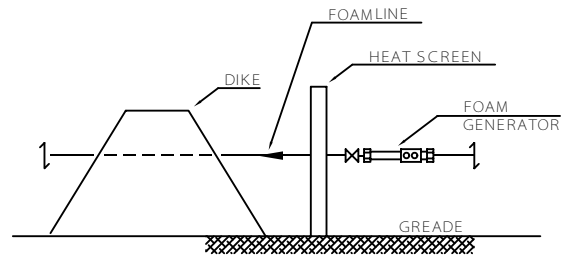
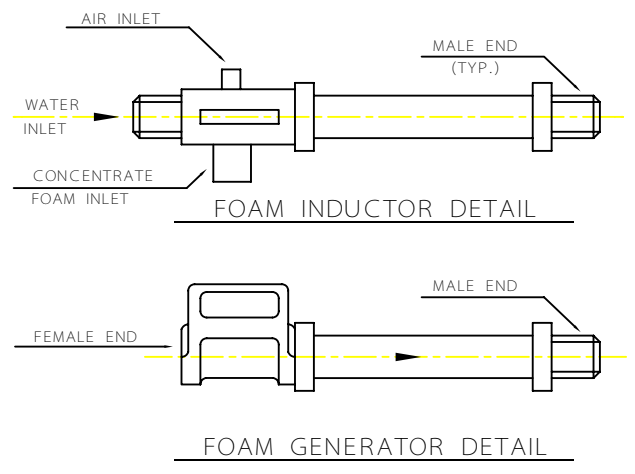


SEMI-FIXED BASE INJECTION SYSTEM USING A SEPARATE FOAM LINE AND EXISTING PRODUCT INLET.

FIXED BASE INJECTION SYSTEM USING A SEPARATE FOAM LINE

TYPICAL SUB - SURFACE SYSTEM FOAM INJECTION PIPING



FOAM LINE AT DIKE

NOTES

- 1- ALL THICKNESS VALUES AND DIMENSIONS ARE IN mm.
- 2- SIZE OF COUPLING AND NUMBER OF FOAM BASE INJECTION SHALL CONFORM TO IPS - E - SF - 140.
- 3- IN SELECTION OF TYPE AND REQUIRED NUMBER OF FOAM GENERATOR CONSIDERATION SHALL BE GIVEN TO DISCHARGE RATE OF FOAM SYSTEM. (REFER TO IPS - E - SF - 140).
- 4- FOR MINIMUM CAPACITY OF FOAM LIQUID CONCENTRATE (FLC) TANK REFER TO (IPS - E - SF - 140).
- 5- SIZE OF FOAM INJECTION PIPEWORK DEPENDS ON CAPACITY OF FOAM GENERATOR AND FOAM CONSUMPTION RATE.
- 6- EITHER SEPARATE FOAM LINE OR COMBINATION OF SAME AND EXISTING PRODUCT LINE MAY BE USED IN BOTH SYSTEM (i.e. FIXED BASE OR SEMI-FIXED BASE INJECTION SYSTEM).

THIS DWG. SUPERSEDES DWG. No.B - 0 - 9010

2		
1		
0		
REV	DESCRIPTION	DATE

IRANIAN PETROLEUM STANDARDS 
NO REVISION PERMITTED UNLESS APPROVED BY STANDARD ORGANIZATION

FIRE FIGHTING SUB - SURFACE FOAM INJECTION FACILITIES

DATE	DRAWING No.	SHEET	REV.
	ISP - D - PI - 124	1	0