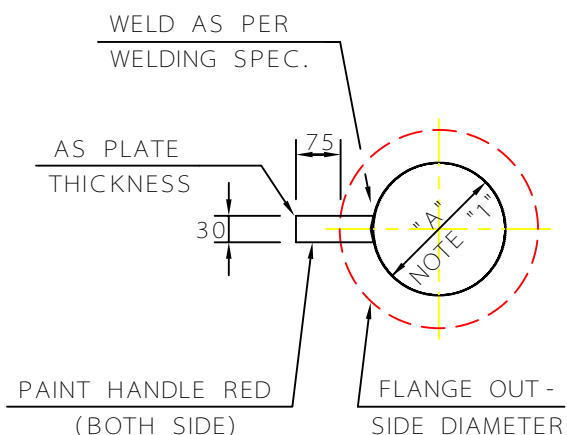


5  
SCHEDULE OF ALLOWABLE TEST PRESSURES (10 Pa)



FLANGE SIZE MIN. ρ THK.mm	DN 50	DN 80	DN 100	DN 150	DN 200	DN 250	DN 300	DN 350	DN 400	DN 450	DN 500	DN 600
	NPS 2"	NPS 3"	NPS 4"	NPS 6"	NPS 8"	NPS 10"	NPS 12"	NPS 14"	NPS 16"	NPS 18"	NPS 20"	NPS 24"
7	62	31	19	9.5	5.5	4	2.5	2	2	—	—	—
8	101.5	48	30	14.5	9	6	4	3.5	2.5	2	1.5	—
10	146.5	69	43	21	13	8.5	6	4	4	3	2.5	1.5
12	222	98.5	58.5	28.5	17.5	12	8.5	7	5.5	4	3	2
13	290.5	128.5	77	37.5	23	15.5	11	9	7	5.5	4.5	3
15	—	180.5	101	47.5	29.5	19.5	14	11.5	8.5	7	5.5	4
16	—	223.5	125	59	36.5	24	17	14	11	8.5	7	5
20	—	321.5	193	88.5	52	35	24.5	21	16	12	10	7
23	—	—	263	121	71	47.5	33.5	28.5	21.5	16.5	14	9.5
26	—	—	343	167	96.5	62	44	37	28.5	22	18	12.5
30	—	—	—	211.5	122	78.5	55.5	46.5	35.5	27.5	23	16
32	—	—	—	261	155	99.5	68.5	57.5	44	34	28	19.5
35	—	—	—	316	187.8	120	85	69.5	53.5	41.5	34	24
40	—	—	—	—	223	143	101	83	63.5	49.5	40.5	28.5
42	—	—	—	—	262	173.5	118.5	97.5	74.5	58	47.5	33
45	—	—	—	—	304	203.5	137.5	117.5	89	67.5	55.5	38.5
52	—	—	—	—	—	267.5	186.5	147.5	116.5	88	72	50.5

**NOTES:**

- 1 - FABRICATE PLATE DIAMETER PER DIM. "A" OF DRAWING IPS - D - PI - 119.
- 2 - USE FLAT PLATE BLIND WITH ASBESTOS.RING GASKET AGAINST RING JOINT FACINGS.
- 3 - MATERIAL: CARBON STEEL.
- 4 - THE CONTACT FACE SHALL BE FREE OF IRREGULARITIES,BURRS,ETC.
- 5 - ALL THICK. VALUES & DIM.S ARE IN mm.
- 6 - ALL CALCULATION IS BASED ON ANSI B31.3.

C			<b>IRANIAN PETROLEUM STANDARDS</b>			
B			NO REVISION PERMITTED UNLESS APPROVED BY STANDARD ORGANIZATION			
A			DATE	DRAWING No.	SHT	REV.
REV.	DESCRIPTION	DATE	HYDROSTATIC TEST BLIND THICKNESS - ALLOWABLE TEST PRESSURE	IPS - D - PI - 121	1	1