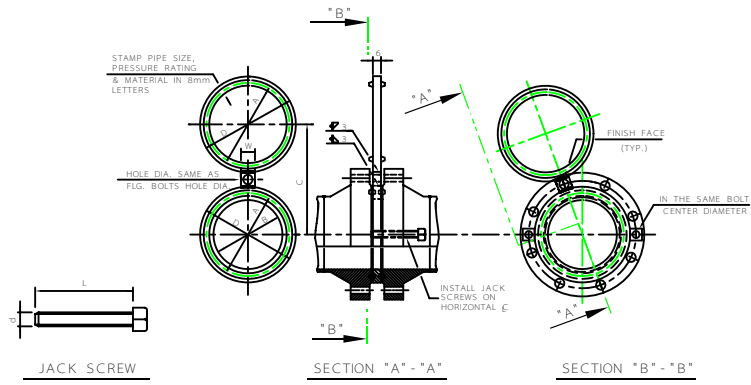


RAISED FACE BLIND

PIPE SIZE		150# R.F.				300# R.F.				600# R.F.			
DN	IN	DM A	DM B	DM W	JACK SCREW SIZE DIA.	DM A	DM B	DM W	JACK SCREW SIZE DIA.	DM A	DM B	DM W	JACK SCREW SIZE DIA.
100	4.0	100	100	100	1/2"	100	100	100	1/2"	100	100	100	1/2"
125	5.0	125	125	125	3/4"	125	125	125	3/4"	125	125	125	3/4"
150	6.0	150	150	150	1"	150	150	150	1"	150	150	150	1"
200	8.0	200	200	200	1 1/4"	200	200	200	1 1/4"	200	200	200	1 1/4"
250	10.0	250	250	250	1 3/4"	250	250	250	1 3/4"	250	250	250	1 3/4"
300	12.0	300	300	300	2"	300	300	300	2"	300	300	300	2"
350	14.0	350	350	350	2 1/4"	350	350	350	2 1/4"	350	350	350	2 1/4"
400	16.0	400	400	400	2 3/4"	400	400	400	2 3/4"	400	400	400	2 3/4"
450	18.0	450	450	450	3"	450	450	450	3"	450	450	450	3"
500	20.0	500	500	500	3 1/4"	500	500	500	3 1/4"	500	500	500	3 1/4"
550	22.0	550	550	550	3 3/4"	550	550	550	3 3/4"	550	550	550	3 3/4"
600	24.0	600	600	600	4"	600	600	600	4"	600	600	600	4"

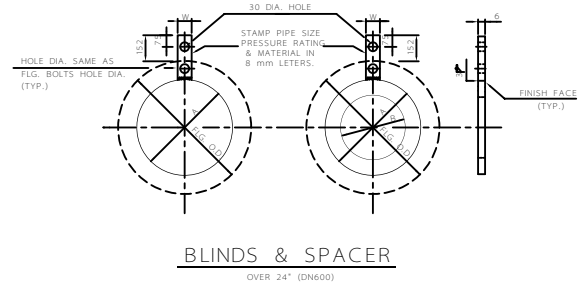
PIPE SIZE		900# R.F.				1500# R.F.				2500# R.F.			
DN	IN	DM A	DM B	DM W	JACK SCREW SIZE DIA.	DM A	DM B	DM W	JACK SCREW SIZE DIA.	DM A	DM B	DM W	JACK SCREW SIZE DIA.
100	4.0	100	100	100	1/2"	100	100	100	1/2"	100	100	100	1/2"
125	5.0	125	125	125	3/4"	125	125	125	3/4"	125	125	125	3/4"
150	6.0	150	150	150	1"	150	150	150	1"	150	150	150	1"
200	8.0	200	200	200	1 1/4"	200	200	200	1 1/4"	200	200	200	1 1/4"
250	10.0	250	250	250	1 3/4"	250	250	250	1 3/4"	250	250	250	1 3/4"
300	12.0	300	300	300	2"	300	300	300	2"	300	300	300	2"
350	14.0	350	350	350	2 1/4"	350	350	350	2 1/4"	350	350	350	2 1/4"
400	16.0	400	400	400	2 3/4"	400	400	400	2 3/4"	400	400	400	2 3/4"
450	18.0	450	450	450	3"	450	450	450	3"	450	450	450	3"
500	20.0	500	500	500	3 1/4"	500	500	500	3 1/4"	500	500	500	3 1/4"
550	22.0	550	550	550	3 3/4"	550	550	550	3 3/4"	550	550	550	3 3/4"
600	24.0	600	600	600	4"	600	600	600	4"	600	600	600	4"

PIPE SIZE		150# R.F.			
DN	IN	DM A	DM B	DM W	JACK SCREW SIZE DIA.
100	4.0	100	100	100	1/2"
125	5.0	125	125	125	3/4"
150	6.0	150	150	150	1"
200	8.0	200	200	200	1 1/4"
250	10.0	250	250	250	1 3/4"
300	12.0	300	300	300	2"
350	14.0	350	350	350	2 1/4"
400	16.0	400	400	400	2 3/4"
450	18.0	450	450	450	3"
500	20.0	500	500	500	3 1/4"
550	22.0	550	550	550	3 3/4"
600	24.0	600	600	600	4"



RING JOINT BLIND

PIPE SIZE		600# R.J.		900# R.J.		1500# R.J.		2500# R.J.		
DN	IN	DM A	DM W	JACK SCREW SIZE DIA.	DM A	DM W	JACK SCREW SIZE DIA.	DM A	DM W	JACK SCREW SIZE DIA.
100	4.0	100	100	1/2"	100	100	1/2"	100	100	1/2"
125	5.0	125	125	3/4"	125	125	3/4"	125	125	3/4"
150	6.0	150	150	1"	150	150	1"	150	150	1"
200	8.0	200	200	1 1/4"	200	200	1 1/4"	200	200	1 1/4"
250	10.0	250	250	1 3/4"	250	250	1 3/4"	250	250	1 3/4"
300	12.0	300	300	2"	300	300	2"	300	300	2"
350	14.0	350	350	2 1/4"	350	350	2 1/4"	350	350	2 1/4"
400	16.0	400	400	2 3/4"	400	400	2 3/4"	400	400	2 3/4"
450	18.0	450	450	3"	450	450	3"	450	450	3"
500	20.0	500	500	3 1/4"	500	500	3 1/4"	500	500	3 1/4"
550	22.0	550	550	3 3/4"	550	550	3 3/4"	550	550	3 3/4"
600	24.0	600	600	4"	600	600	4"	600	600	4"



BLINDS & SPACER
OVER 24" (DN600)

NOTES

- 1- DESIGNATION DN IN "SI" UNITS IS USED FOR NOMINAL DIAMETER.
- 2- ALL THICKNESS VALUES AND DIMENSIONS ARE IN mm.
- 3- VAPOR BLINDS SHALL BE INDICATED ON FLOW DIAGRAM & DESIGNED PER THIS DRAWING.
- 4- VAPOR BLINDS ARE USUALLY INSTALLED AS A SAFETY FEATURE WHEN DOING INTERNAL WORK ON VESSELS, FURNACES, ETC.
- 5- VAPOR BLINDS SHALL BE LOCATED SO THAT THEY WILL BE READILY ACCESSIBLE. IF POSSIBLE PROVIDE PLATFORMS AT TOWERS, HOWEVER, PLATFORMS SHALL NOT BE PROVIDED FOR INDIVIDUAL BLINDS UNDER 6000 FROM GRADE.
- 6- VAPOR BLINDS INSTALLED IN PIPEWAYS SHALL BE GROUPED TOGETHER IF POSSIBLE.
- 7- STAGGER BLINDS WHEN GROUPED IN HORIZONTAL OR VERTICAL RUNS.
- 8- JACK SCREWS ARE NOT REQUIRED FOR BLINDS 10" (DN250) LINES AND SMALLER.
- 9- MATERIALS: AS PER PIPING MATERIAL SPECIFICATION.
- 10- JACK SCREWS SHALL BE SQUARE HEAD, CLIP POINT, CASE HARDENED STEEL SET SCREWS NATIONAL COURSE THREAD FULL LENGTH.

THIS DRAWING SUPERSEDES DRAWING No. D-O-5043

C	B	A	DESCRIPTION	DATE

IRANIAN PETROLEUM STANDARD

NO REVISION PERMITTED UNLESS APPROVED BY STANDARD ORGANIZATION

VAPOR BLIND DETAILS

DATE	DRAWING No.	SHEET	REV.

IPS - D - PI - 120