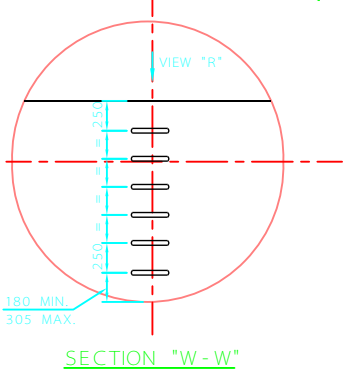
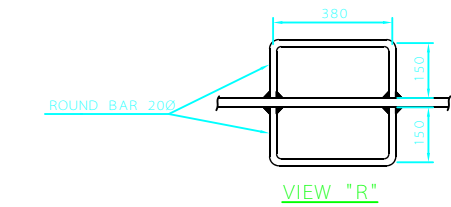
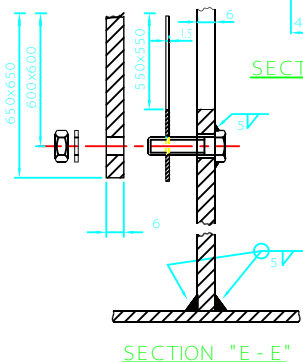


WEIRS FOR HORIZONTAL VESSELS ≤ 1200 DIA.



WEIRS FOR HORIZONTAL VESSELS > 1200 DIA



NOTES:

- 1- THE COVER OF WEIR MANHOLE IS TO BE LOCATED ON THE SAME SIDE AS OF VESSEL MANHOLE.
- 2- INSERT A 1.5 mm. THICK ASBESTOS FREE GASKET BETWEEN MANHOLE COVER AND WEIR.
- 3- COVER AND WEIR MATERIAL SHALL BE SAME AS VESSEL MATERIAL IN THE PORTION THEY ARE TO BE INSTALLED. THICKNESS SHALL BE AT LEAST 10 mm. FOR CARBON STEEL, AND 6 mm. FOR OTHER MATERIALS.
- 4- BOLTS AND NUTS SHALL BE AT LEAST 5% Cr, 0.5% Mo. UNLESS OTHER MATERIAL IS SPECIFIED.
- 5- ALL DIMENSIONS ARE IN MILLIMETERS, UNLESS OTHERWISE SHOWN.
- 6- IN CASE OF CONFLICT BETWEEN THIS STANDARD AND VESSEL DRAWING, THE LATTER SHALL GOVERN.
- 7- SUITABLE HANDLES SHOULD BE CONSIDERED FOR COVER OF WEIR MANHOL.
- 8- BASIC CORROSION FOR CARBON STEEL HAS BEEN ASSUMED EQUAL TO 4 mm. GREATER CORROSION INVOLVES CORRESPONDINGLY GREATER THICKNESS.
- 9- FOR VESSELS > 1600 DIA.) CHECK THE NECESSITY OF REINFORCING THE WEIR CONSIDERING ON ONE SIDE THE ABSENCE OF LIQUID AND ON THE OTHER SIDE HEAD LIQUID WITH SPECIFIC GRAVITY > 1 .

REV	DESCRIPTION	DATE
C		
B		
A		

IRANIAN PETROLEUM STANDARDS 
NO REVISION PERMITTED UNLESS APPROVED BY STANDARD ORGANIZATION

WEIRS FOR HORIZONTAL VESSELS

DATE	DRAWING No.	SHEET	REV.
	IPS - D - ME - 050	1	1