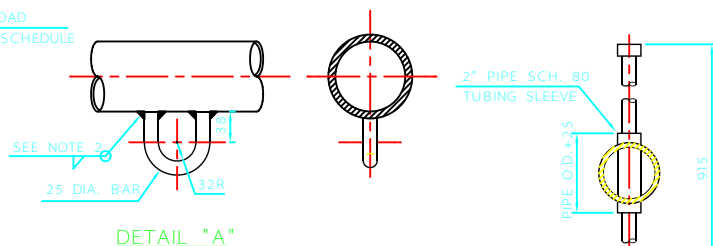
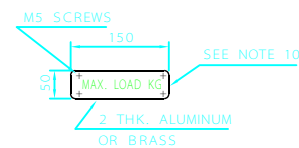


TYPICAL ELEVATION

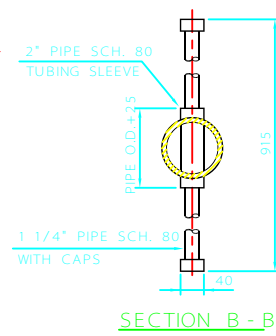
DAVIT SCHEDULE				
MK	LOAD	H	L	PIPE SIZE
1	450 Kg	914	3429	6" STD. W.T.
2	450 Kg	1219	3835	6" SCH. 80
3	450 Kg	1524	4445	8" STD. W.T.
4	680 Kg	1372	3581	8" STD. W.T.
5	680 Kg	1829	4521	8" STD. W.T.
6	900 Kg	1829	6274	8" XS W.T.



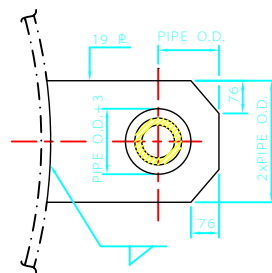
DETAIL "A"



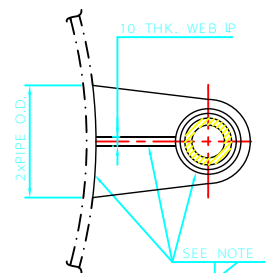
DETAIL "B"



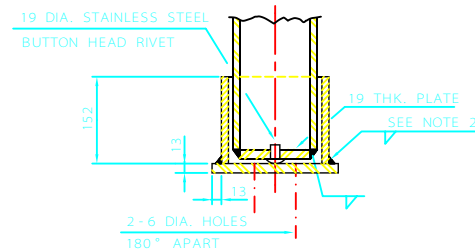
SECTION B - B



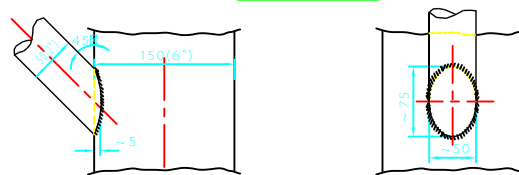
SECTION C - C



SECTION E - E



SECTION F - F



DETAIL "C"
FOR 6" PIPE SIZE

NOTES:

- 1- ALL DIMENSIONS ARE IN MILLIMETERS.
- 2- ALL WELDINGS SHALL BE OF CONTINUOUS FILLET TYPE WITH DIMENSIONS AT LEAST THE THINNER OF THE WELDED PARTS.
- 3- SLEEVE SHALL BE MADE OF 10 mm. WALL THK. THE I.D. SHALL BE 3 mm. LARGER THAN O.D. OF PIPE.
- 4- CHECK DAVIT TO CLEAR PLATFORM WHEN LOWERING LOAD.
- 5- DAVITS SHALL BE FURNISHED BY THE LADDER & PLATFORM FABRICATOR.
- 6- BRACKETS SHALL BE FURNISHED BY THE VESSEL FABRICATOR.
- 7- DAVITS ARE DESIGNED FOR 50% IMPACT LOAD.
- 8- STRESS RELIEVED VESSELS TO HAVE BRACKET & CLIPS WELDED TO VESSEL PRIOR TO RELIEVING.
- 9- MATERIAL SPECIFICATIONS REINFORCING: PLATES=AS SHELL; PLATES=ASTM A285 Gr.C OR EQUIVALENT; PIPES=ASTM A53 Gr. B OR EQUIVALENT; SHAPES=ASTM A36 OR EQUIVALENT.
- 10- THE ORIENTATION, ELEVATION AND TYPE OF DAVIT SHALL BE INDICATED ON VESSEL DRAWING. LABEL SHALL INDICATE MAX. ALLOWABLE LOAD AS SPECIFIED IN TABLE AND SHALL BE FIXED IN A VISIBLE POSITION.
- 11- SIZING OF GUSSET PLATE AND REINFORCE PAD (IF IT IS REQUIRED) SHALL BE CARRIED OUT BY THE VESSEL FABRICATOR.

REV	DESCRIPTION	DATE
C		
B		
A		

IRANIAN PETROLEUM STANDARDS
NO REVISION PERMITTED UNLESS APPROVED BY STANDARD ORGANIZATION

COLUMN DAVIT DETAILS

DATE	DRAWING No.	SHEET	REV.
	IPS - D - ME - 040	1	1