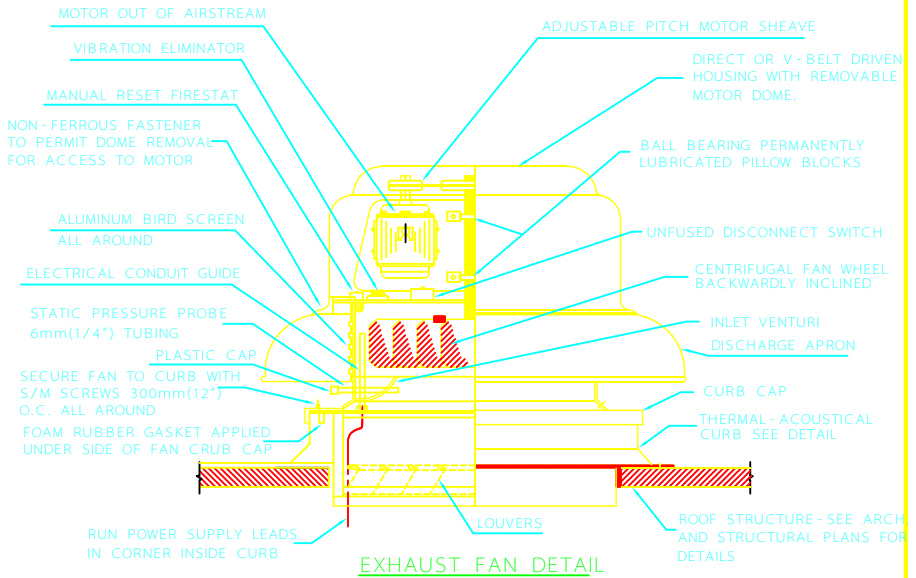


EQUIPMENT INSTALLATION DETAILS OF FANS, ROOM AIR CONDITIONERS & DESERT COOLERS

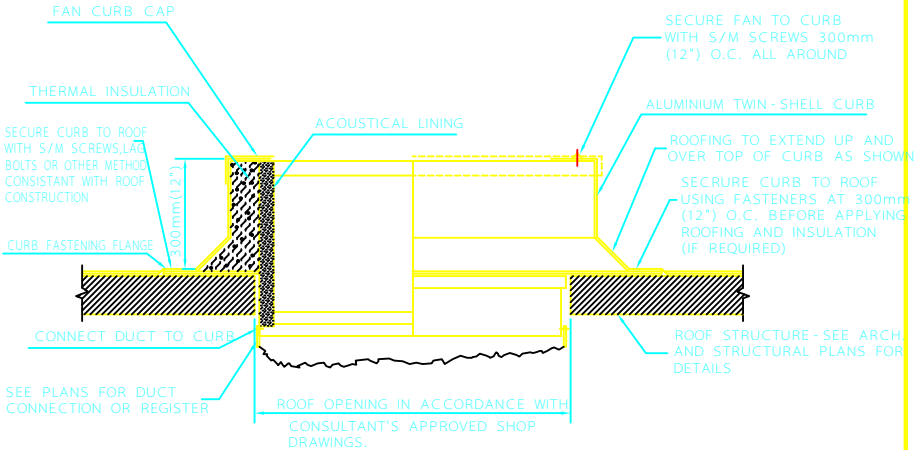
C			IRANIAN PETROLEUM STANDARDS			
B			NO REVISION PERMITTED UNLESS APPROVED BY STANDARD ORGANIZATION			
A			COVER SHEET	DATE	DRAWING No.	SHT/REV.
REV.	DESCRIPTION	DATE			IPS-D-AR-014	1/4



EXHAUST FAN DETAIL

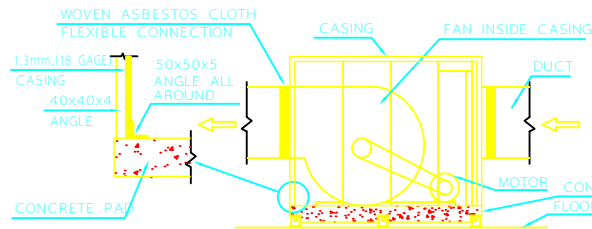
NOTE:

CURBS AND FANS SHALL PREFERABLY BE FROM THE SAME MANUFACTURER.

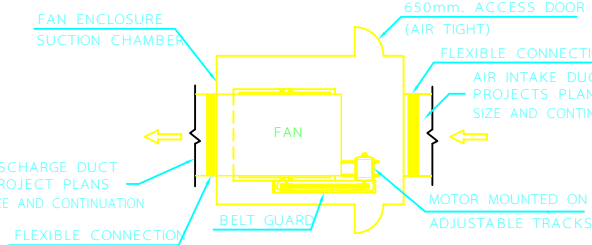


THERMAL-ACOUSTICAL CURB DETAIL

C			IRANIAN PETROLEUM STANDARDS 			
B			NO REVISION PERMITTED UNLESS APPROVED BY STANDARD ORGANIZATION			
A			TYPICAL POWER ROOF VENTILATOR(PRV)	DATE	DRAWING No.	SHT/REV.
REV	DESCRIPTION	DATE	INSTALLATION DETAIL		IPS-D-AR-014	2/4

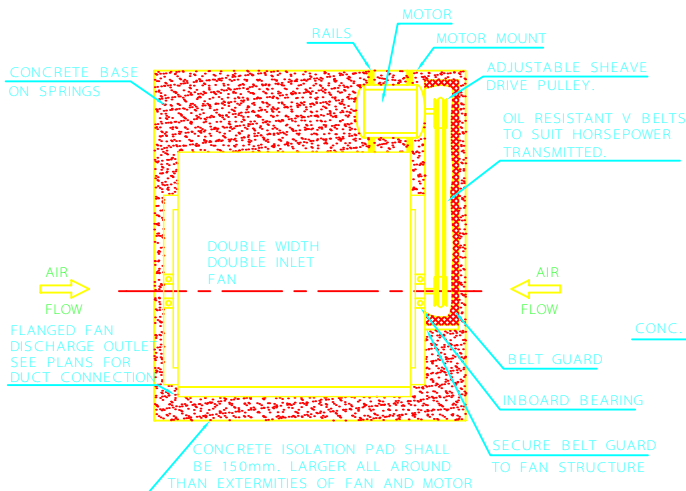


SIDE ELEVATION

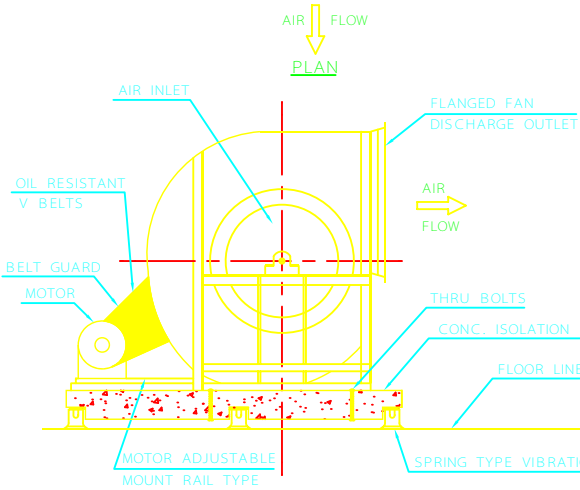
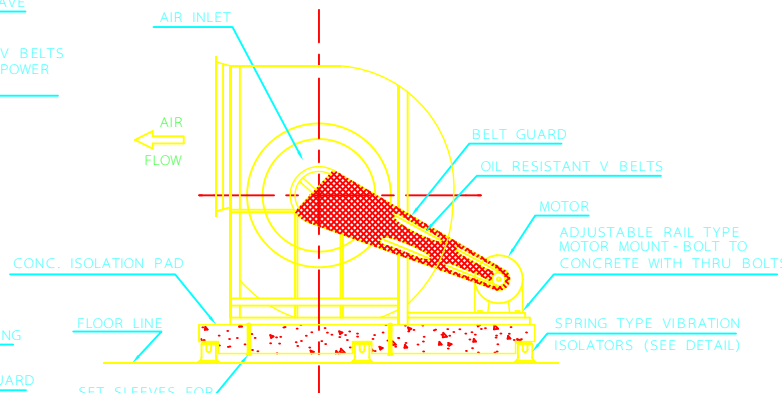


PLAN

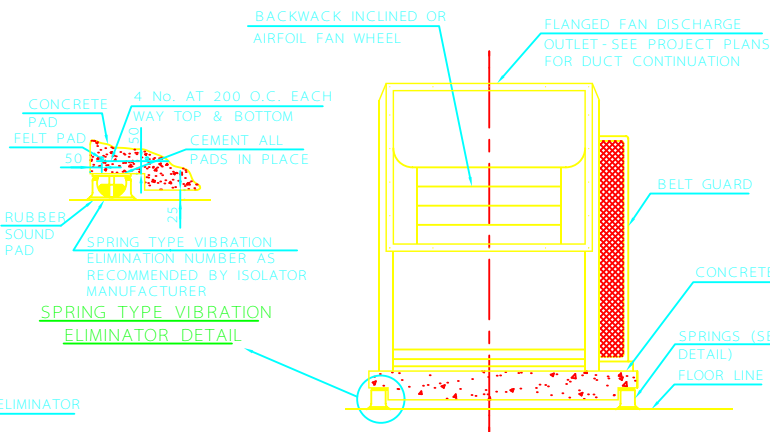
DETAILS OF FAN INSTALLED IN SHEET METAL HOUSING



MOTOR END ELEVATION



INLET SIDE ELEVATION



FRONT ELEVATION

NOTES:
 1 - ALL DIMENSIONS ARE IN MILLIMETERS UNLESS OTHERWISE NOTED.

C		
B		
A		
REV	DESCRIPTION	DATE

IRANIAN PETROLEUM STANDARDS
 NO REVISION PERMITTED UNLESS APPROVED BY STANDARD ORGANIZATION

DOUBLE WIDTH DOUBLE INLET FAN

DATE	DRAWING No.	SHEET	REV.
	IPS - D - AR - 014	3	4

